

COMPACT DISC PLAYER

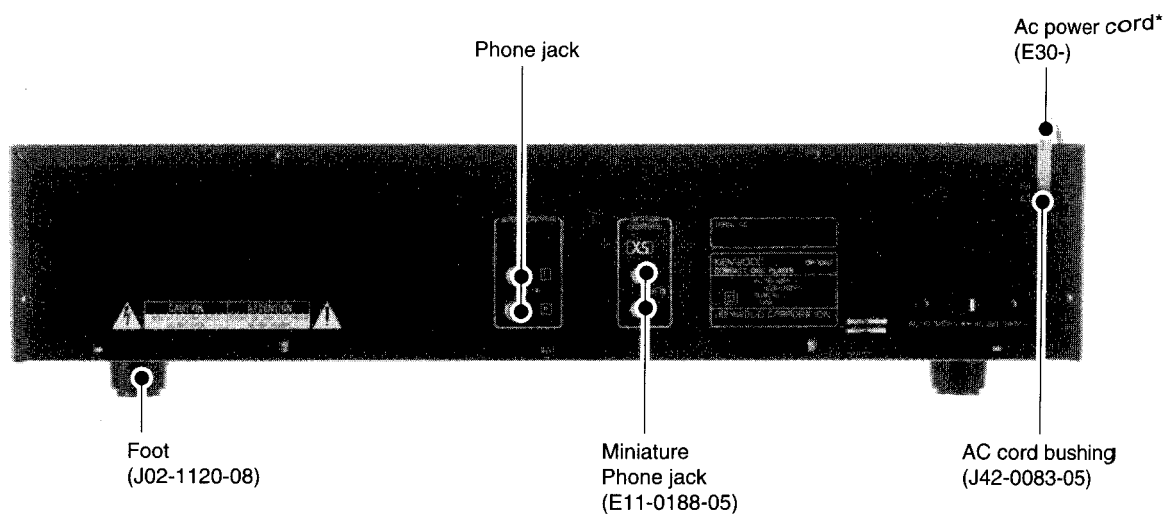
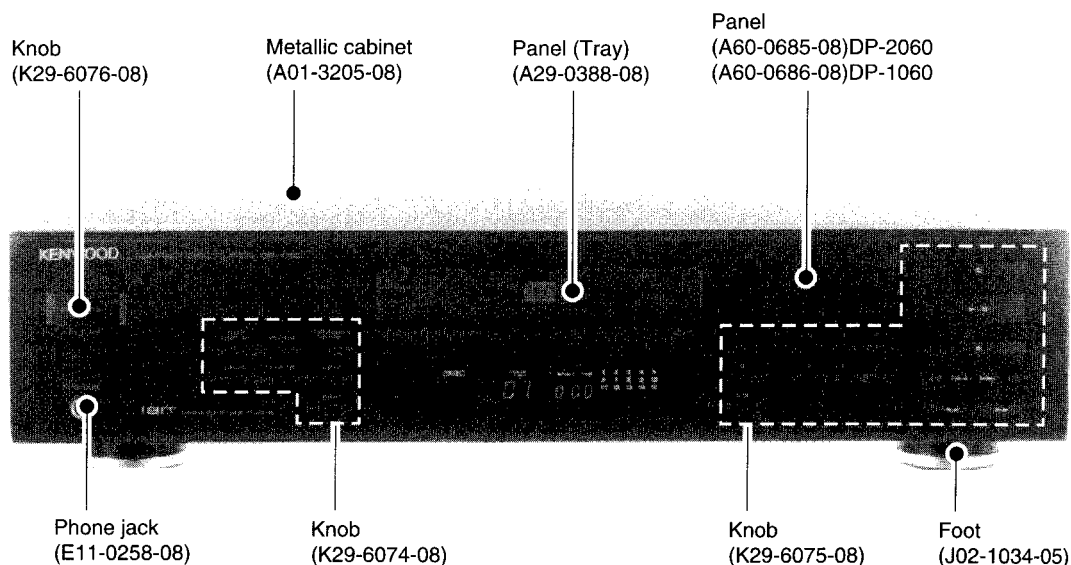
DP-1060/2060

SERVICE MANUAL

KENWOOD

©1994-9 PRINTED IN KOREA

B51-4978-00 (K) 3880



In compliance with Federal Regulations, following are reproductions of labels on, or inside the product relating to laser product safety.

KENWOOD Corp. certifies this equipment conforms to DHHS Regulations No. 21 CFR 1040.10, Chapter 1, Subchapter J.

DANGER : Laser radiation when open and interlock defeated. AVOID DIRECT EXPOSURE TO BEAM

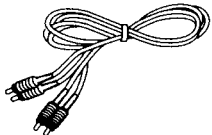
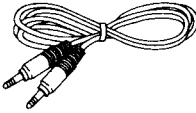
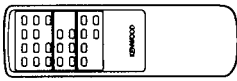
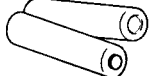
Photo is DP-1060

External view of DP-2060 is same as DP-1060

DP-1060/2060

ACCESSORIES/CAUTIONS

Accessories

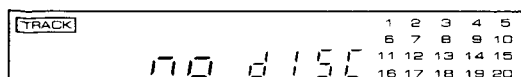
● Audio cord 1 (E30-0505-05)	● System control cord 1 (E30-2733-05)
	
● Remote control unit 1 (DP-2060 only) (A70-0983-05)	● Batteries (R6/AA) 2 (DP-2060 only)
	
Battery cover (A09-0170-08)	

Cautions

Note related to transportation and movement

Before transporting or moving the CD PLAYER, carry out the following operations.

1. Turn the power ON but do not load a disc.
2. Wait a few seconds and verify that the display shown appears.
3. Turn the power OFF.



Beware of condensation

When water vapor comes into contact with the surface of cold material, water drops are produced.

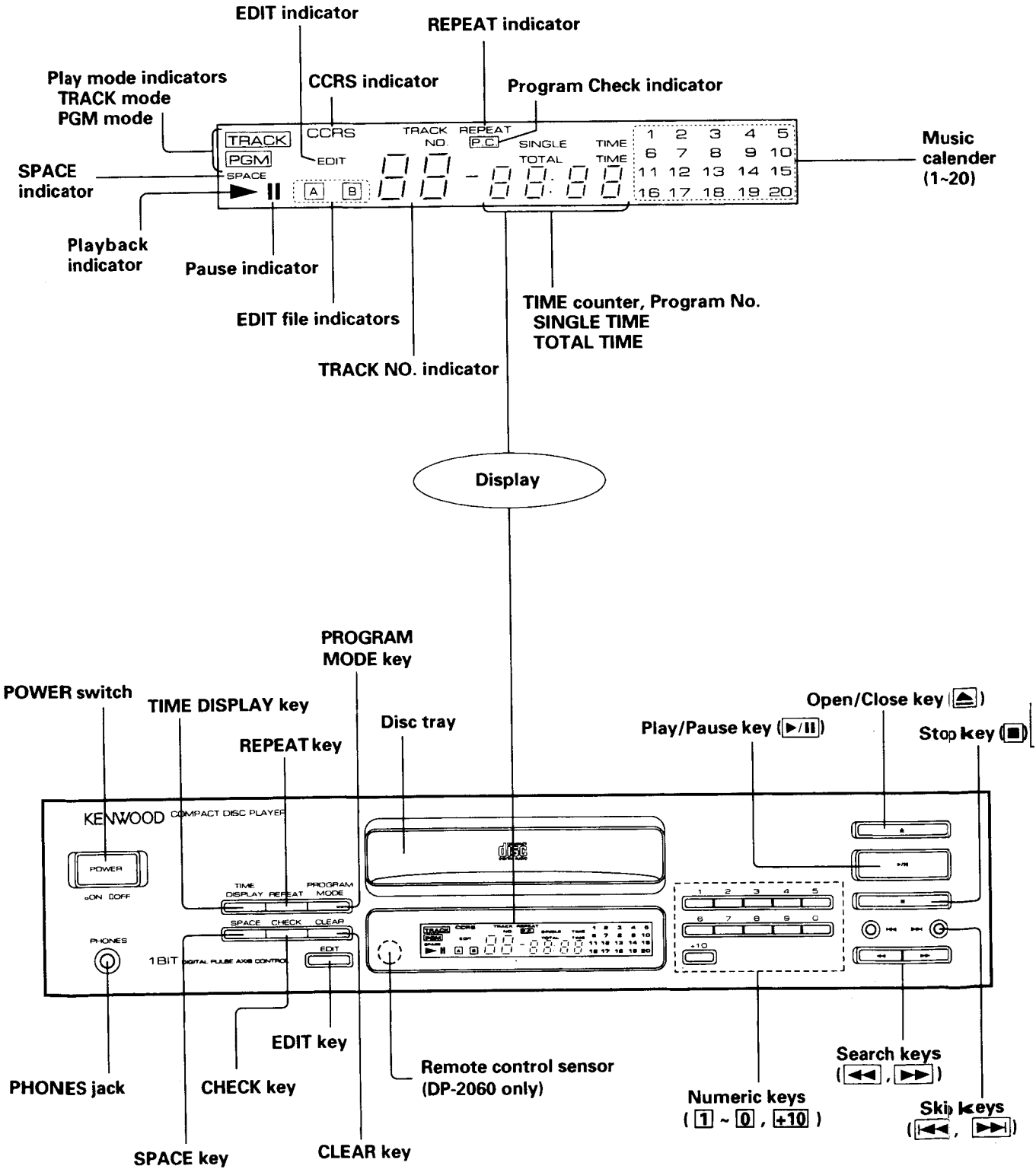
If condensation occurs, correct operation may not be possible, or the unit may not function correctly.

This is not a malfunction, however, the unit should be dried. (To do this, turn the POWER switch ON and leave the unit as it is for several hours.)

Be especially careful in the following conditions:

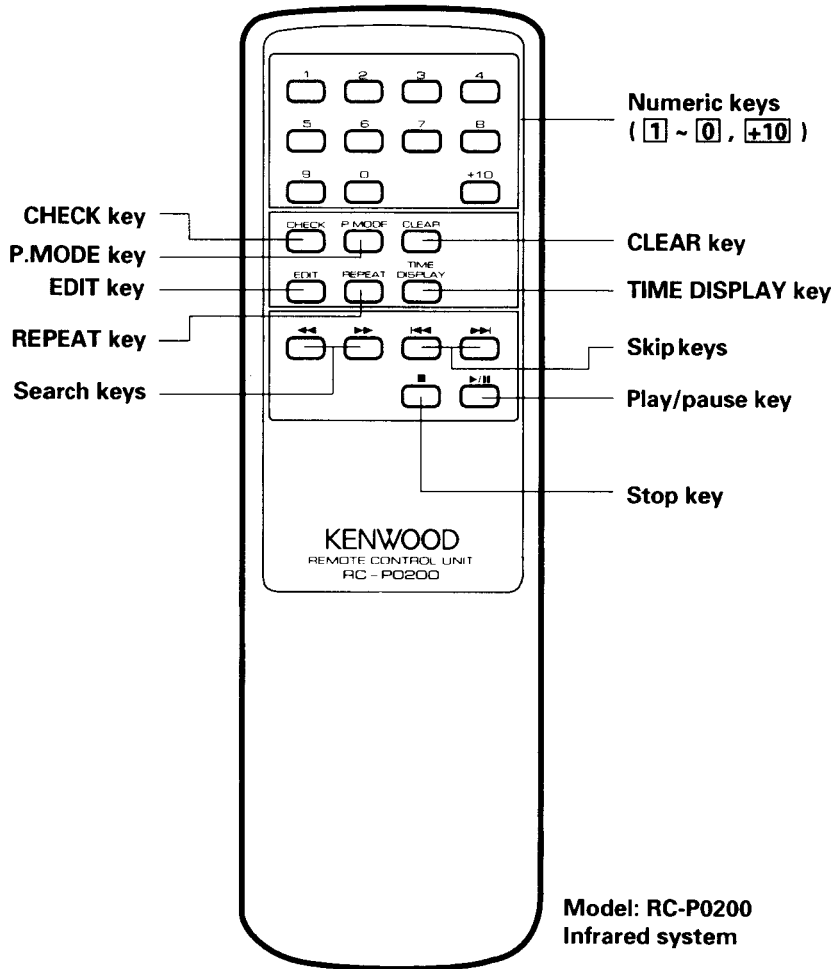
- When the unit is brought from a cold place to a warm place, and there is a large temperature difference.
- When a heater starts operating.
- When the unit is brought from an air-conditioned place to a place of high temperature with high humidity.
- When there is a large difference between the internal temperature of the unit and the ambient temperature, or in conditions where condensation occurs easily.

CONTROL



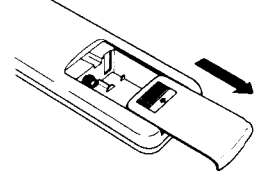
REMOTE CONTROL

The operations of each are the same as those of the keys in the unit.

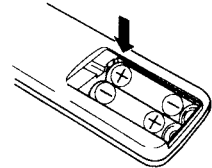


■ Loading batteries

1 Remove the cover.

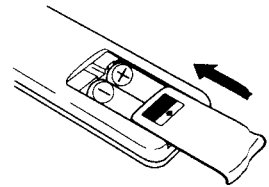


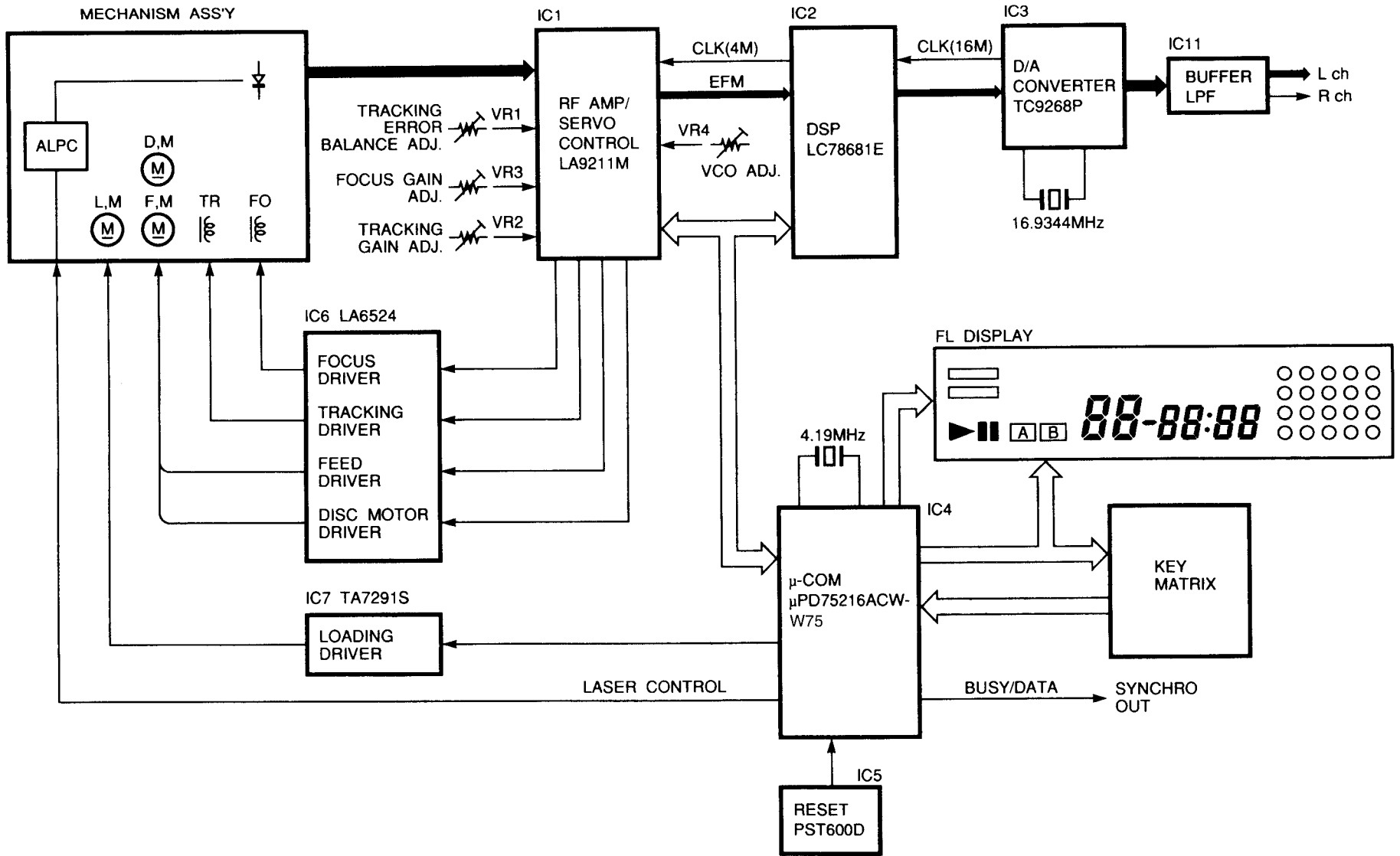
2 Insert batteries.



Insert two batteries (R6/AA) as indicated by the polarity marking.

3 Close the cover.





BLOCK DIAGRAM

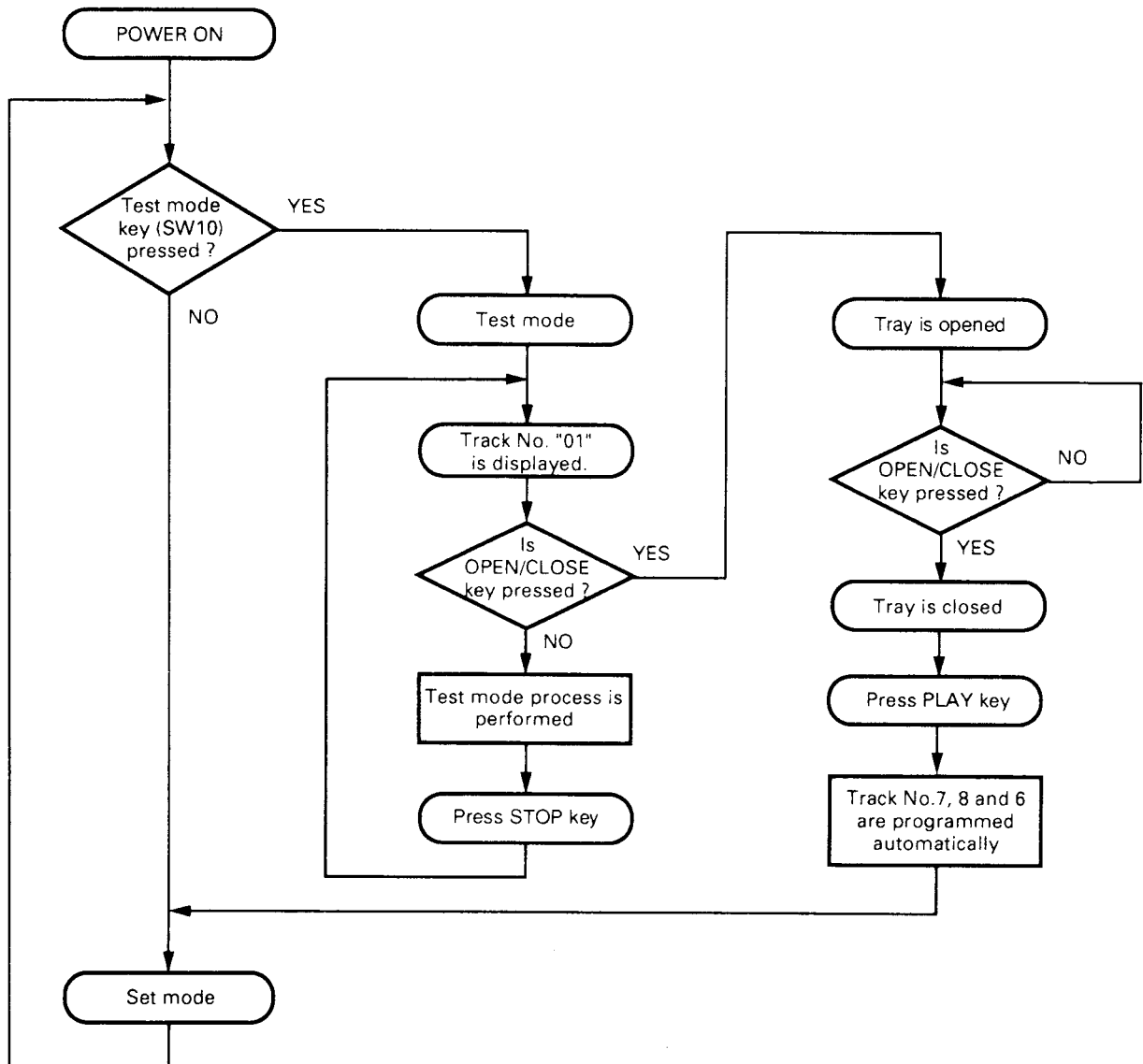
DP-1060/2060

CIRCUIT DESCRIPTION

1. Test mode

1-1. Setting the test mode

This microprocessor built in this unit can be put to TEST MODE (SW10).



CIRCUIT DESCRIPTION

1-2. Key and functions valid in test mode

No.	Input key	Function	Track No. display																																				
1	PLAY	(1) Focusing servo ON (2) Tracking servo ON (3) Feed servo ON	TRACK NO. 05 ↓ Displayed for a few seconds after completion (1), (2) and (3). ↓ Disc Track No. is displayed.																																				
2	CHECK or Number "0" key	(1) Focusing servo ON (2) Tracking servo OFF (3) Feed servo OFF	TRACK NO. 03																																				
3	STOP	(1) Focusing servo OFF (2) Tracking servo OFF (3) Feed servo OFF	TRACK NO. 01																																				
4	▶▶	In the STOP mode, moves the pickup slightly toward the outer position of disc. When feed servo is ON, sets the track gain to "H".	-																																				
5	◀◀	In the STOP mode, moves the pickup slightly toward the inner position of disc. When feed servo is ON, sets the track gain to "L".	-																																				
6	UP ▶▶	Turns all FL display lamps ON.	TRACK NO. 88																																				
7	DOWN ◀◀	Turns all FL display lamps OFF. "TRACK NO." is lighted.	TRACK NO. 88																																				
8	+10	Playback Track No.1 under High-speed mode (If not open tray, SPACE key function is available.)	-																																				
9	SPACE	Set playback mode to High-speed or Normal.	-																																				
10	P. MODE	Track No. 7,8, and 6 (High-speed) are programmed and playback from Track No.7. The test mode is canceled.	-																																				
11	OPEN/CLOSE	When the tray is opened then closed. Track No. 7, 8, and 6 are programmed and set is in STOP mode. The test mode is canceled.	TRACK NO. 00																																				
12	Numeric key (1 ~ 9)	Jumps tracks as shown below. <table border="1" style="margin-left: 20px;"> <tr> <td>Key</td> <td>1</td> <td>2</td> <td>3</td> <td>4</td> <td>5</td> </tr> <tr> <td>Number of tracks</td> <td>1</td> <td>4</td> <td>128</td> <td>512</td> <td>1000</td> </tr> <tr> <td>Direction</td> <td colspan="5" style="text-align: center;">Outer</td> </tr> <tr> <td>Key</td> <td>6</td> <td>7</td> <td>8</td> <td>9</td> <td style="border: none;"></td> </tr> <tr> <td>Number of tracks</td> <td>1</td> <td>4</td> <td>128</td> <td>512</td> <td style="border: none;"></td> </tr> <tr> <td>Direction</td> <td colspan="5" style="text-align: center;">Inner</td> </tr> </table>	Key	1	2	3	4	5	Number of tracks	1	4	128	512	1000	Direction	Outer					Key	6	7	8	9		Number of tracks	1	4	128	512		Direction	Inner					-
Key	1	2	3	4	5																																		
Number of tracks	1	4	128	512	1000																																		
Direction	Outer																																						
Key	6	7	8	9																																			
Number of tracks	1	4	128	512																																			
Direction	Inner																																						
13	REPEAT	(1) Tray Opened (2) Laser ON The REPEAT function is canceled when the tray is closed by pressing the tray. "REPEAT" figures is lighted.	TRACK NO. 02																																				

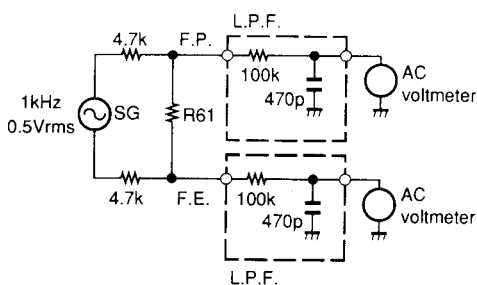
REPEAT mode : Press "REPEAT" key → Press "OPEN/CLOSE" key → Press "REPEAT" key...

ADJUSTMENT

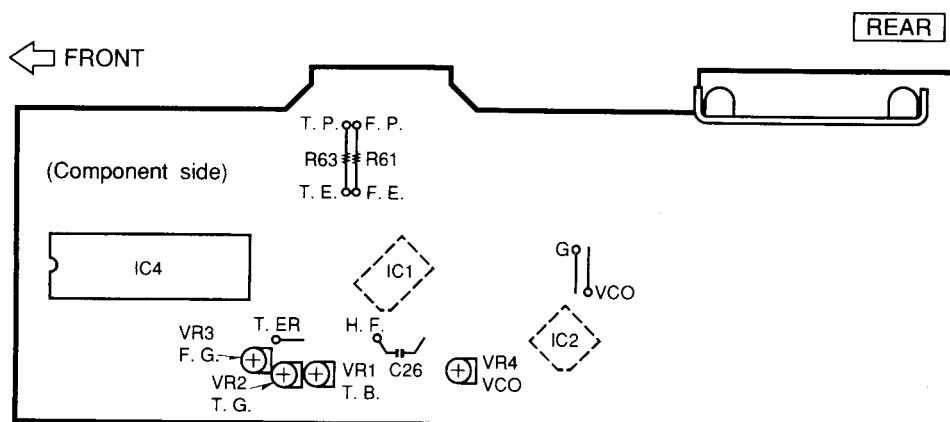
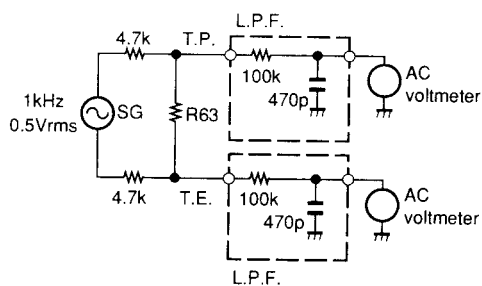
No.	ITEM	INPUT SETTING	OUTPUT SETTING	PLAYER SETTING	ALIGNMENT POINT	ALIGN FOR	FIG.
1	VCO	Test disc Type 4	Connect the frequency counter to "VCO" and GND.	Turn on the SW10 (TEST MODE) to enter the test mode. Press the STOP key. Then, confirm that the display is "01"	VR4	4.05MHz±15kHz	(a)
2	TRACKING ERROR BALANCE	Test disc Type 4	Connect the oscilloscope to "T.ER".	Press the OPEN/CLOSE key to open the tray. Reset to TEST mode. Then, press the CHECK key. Confirm that the display is "03".	VR1	Symmetry between upper and lower patterns, or DC=0±0.05V	(b)
3	FOCUS GAIN	Test disc Type 4 Apply signal of 1kHz, 0.5Vrms to R61(F.P.- F.E.).	Connect a LPF to R61 (F.P.- F.E.) ,to which connect two AC voltmeters.	Press the PLAY key. Confirm that the display is "05".	VR3	Two VTVMs should read the same value.	(c)
4	TRACKING GAIN	Test disc Type 4 Apply signal of 1kHz, 0.5Vrms to R63(T.P.- T.E.).	Connect a LPF to R63 (T.P.- T.E.) ,to which connect two AC voltmeters.	Press the PLAY key. Confirm that the display is "05".	VR2	Two VTVMs should read the same value.	(d)
5	H.F. LEVEL CONFIRMATION	Test disc Type 4	Connect the oscilloscope to "H.F.".	Press the PLAY key. Confirm that the display is "05".	-	1.5Vp-p ~ 1.5Vp-p	(e)

(NOTE) Type 4 disc : SONY YEDS-18 TEST DISC or equivalent.
Adjustment procedures are in TEST MODE.

(c) Focus gain

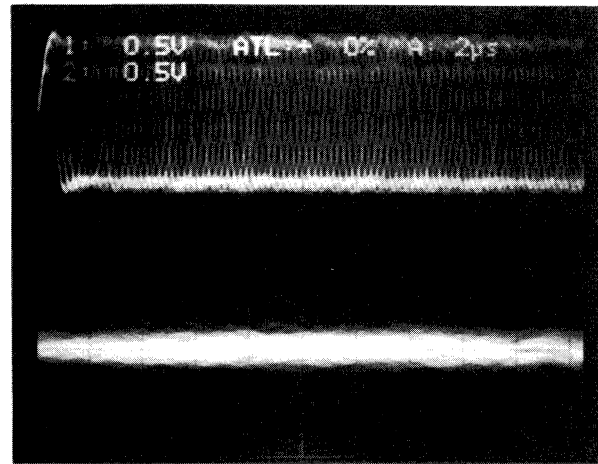


(d) Tracking gain



ADJUSTMENT

RF level, TE waveform



CH1
RF signal

← 0(V)

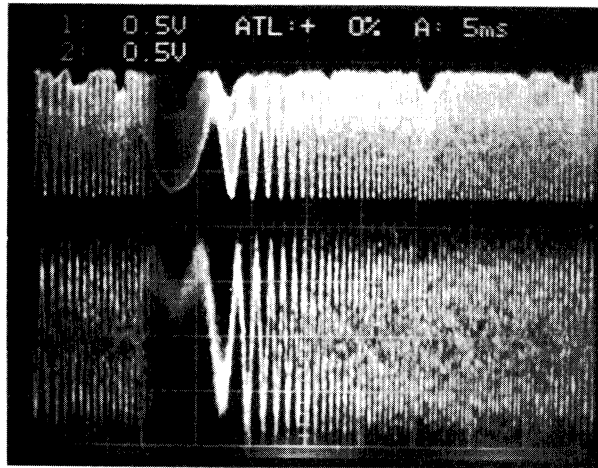
← 0(V)

CH2
TE signal

↑
18µs

- RF signal and E.Spot signal in test mode (PLAY).
- If the diffraction grating has been adjusted properly, the influence of triggering is observed on the E.Spot waveform of approx. 18µs after RF signal, in the form of a projection.

(b) Tracking error balance



CH1
RF signal

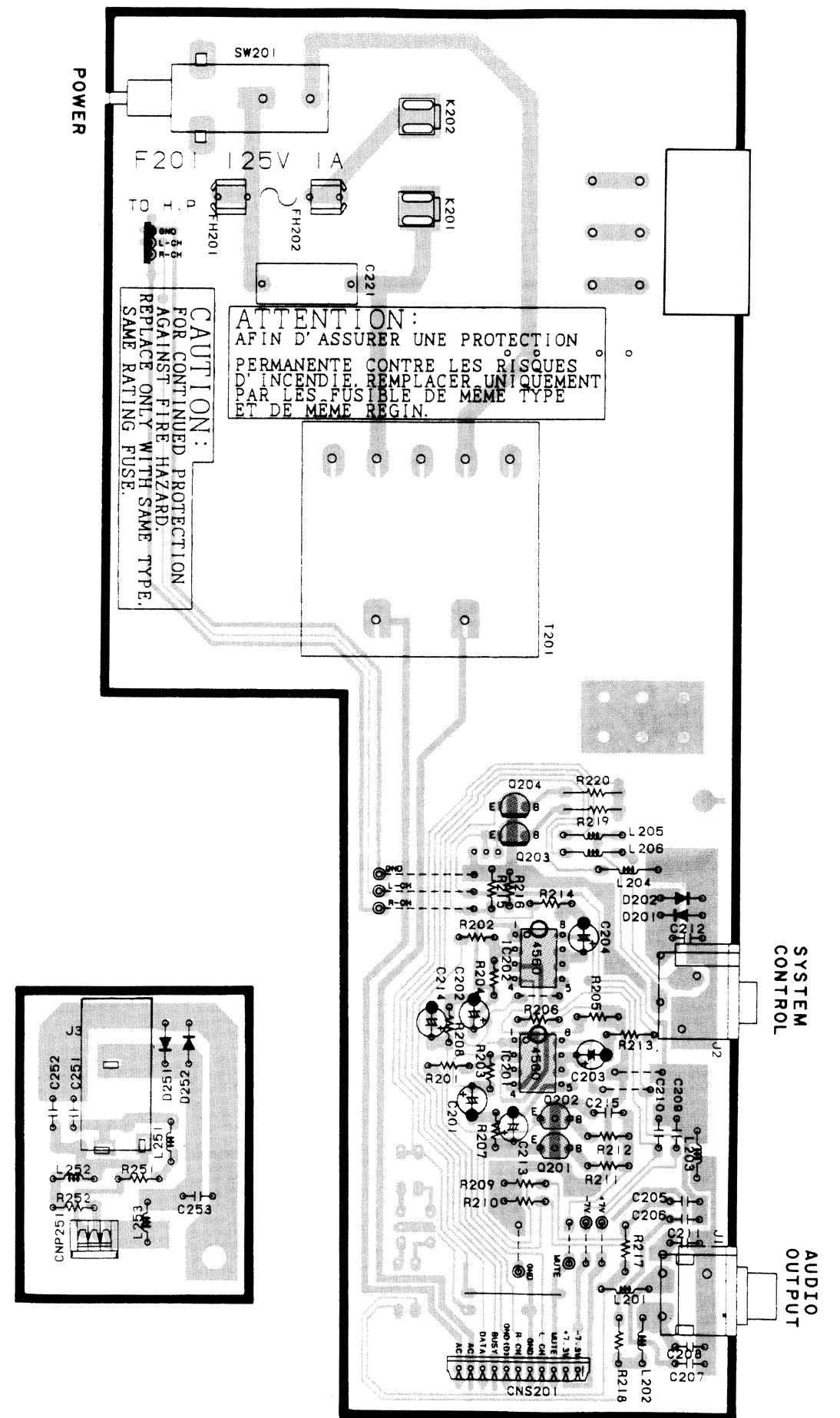
← 0(V)

← 0(V)

CH2
TE signal

- RF signal and T.Error signal; in test mode (Focusing ON). (Disc type 4)
- Adjust T.Error so that the waveform is symmetrical above and below 0V. (VR 1)

PC BOARD (COMPONENT SIDE VIEW)

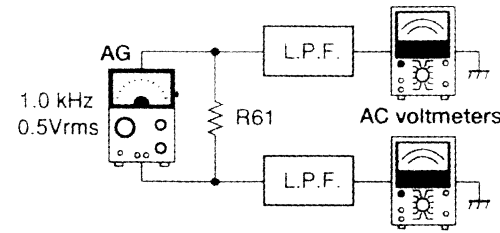


Refer to the schematic diagram for the value of resistors and capacitors.

PC BOARD (COMPONENT SIDE VIEW)

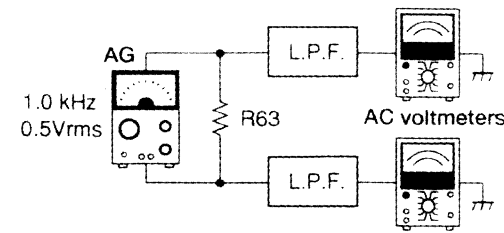
(c) Focus gain :

Two VTVMs should read the same value.



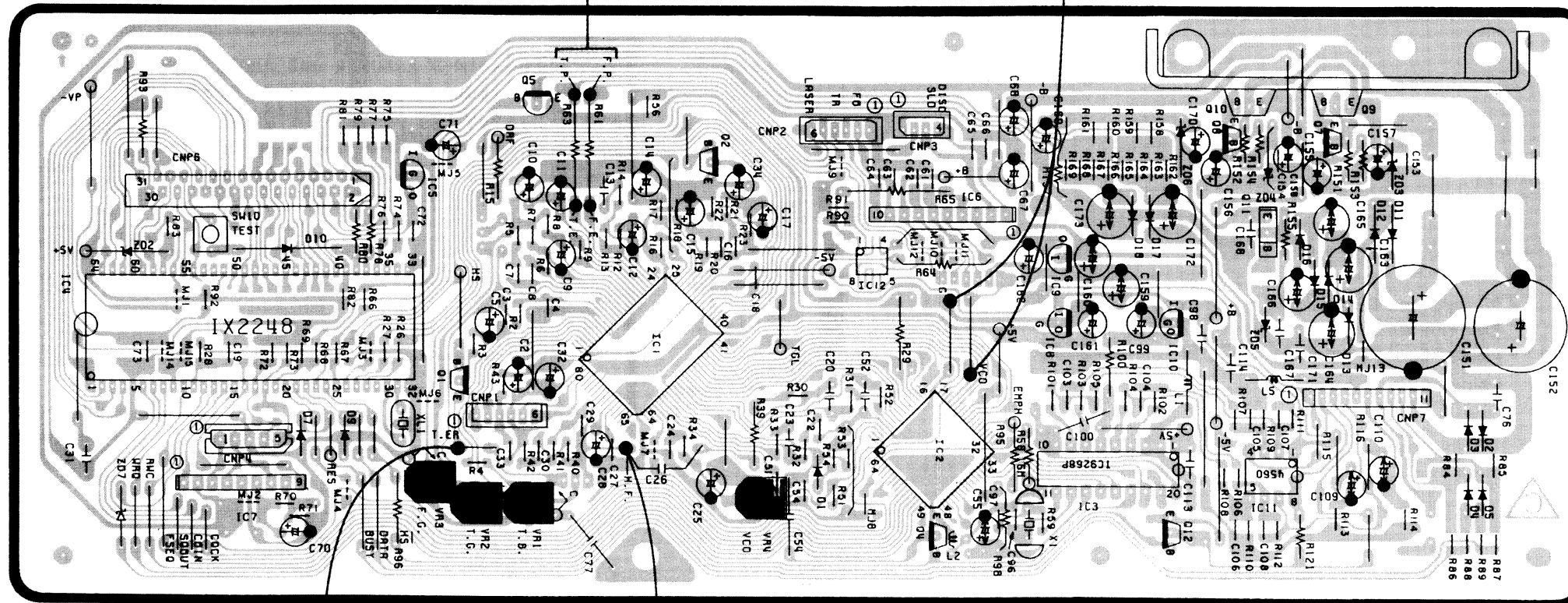
(d) Tracking gain :

Two VTVMs should read the same value.



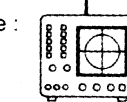
Frequency counter

(a) VCO : 4.05MHz ± 15kHz



(b) Tracking error balance :

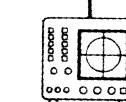
Symmetry between upper and lower or DC=0 ± 0.05V



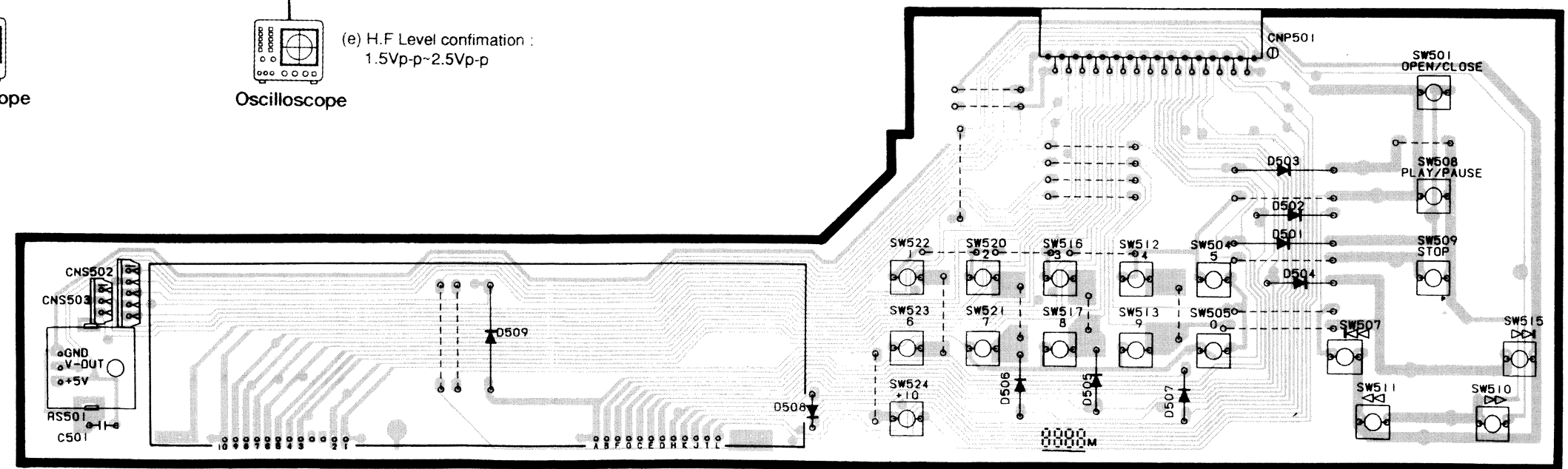
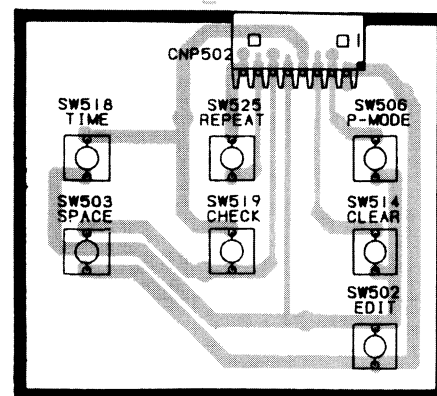
Oscilloscope

(e) H.F Level confirmation :

1.5Vp-p-2.5Vp-p



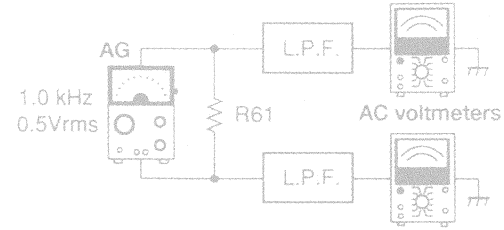
Oscilloscope



PC BOARD (COMPONENT SIDE VIEW)

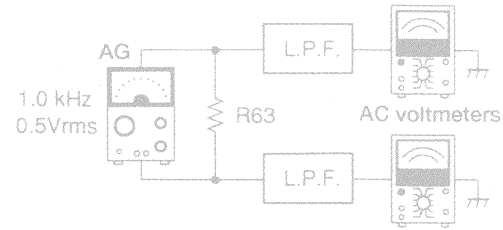
(c) Focus gain :

Two VTVMs should read the same value.



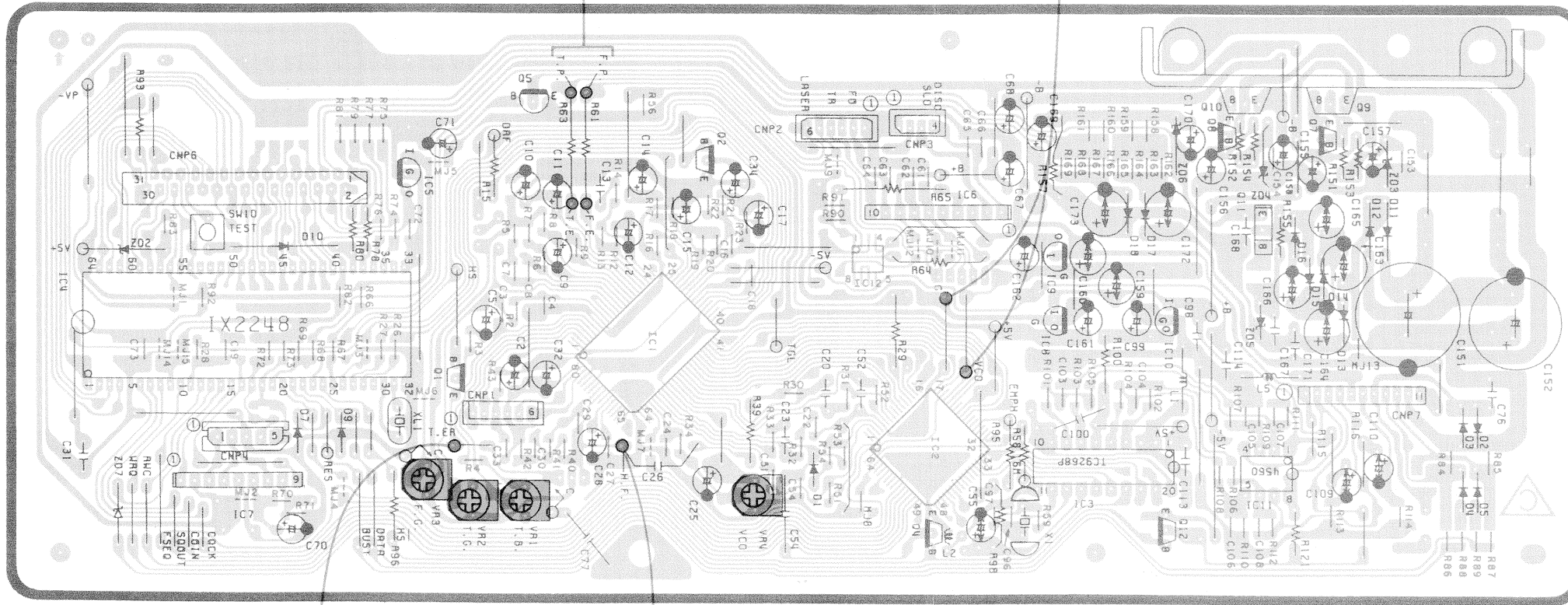
(d) Tracking gain :

Two VTVMs should read the same value.



Frequency counter

(a) VCO : 4.05MHz ± 15kHz



(b) Tracking error balance :

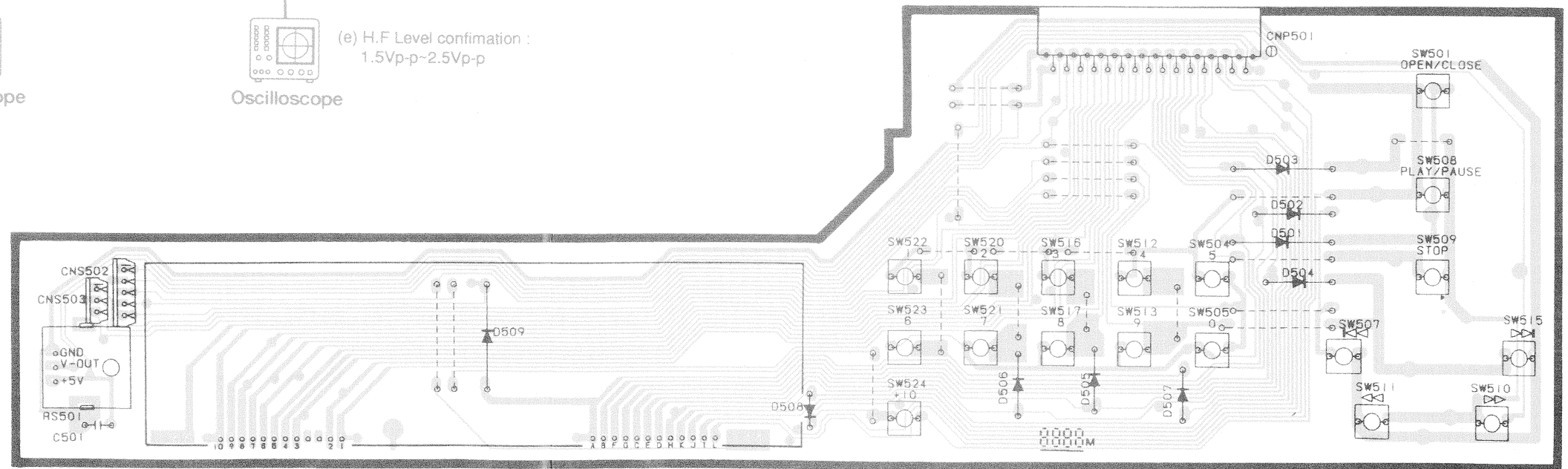
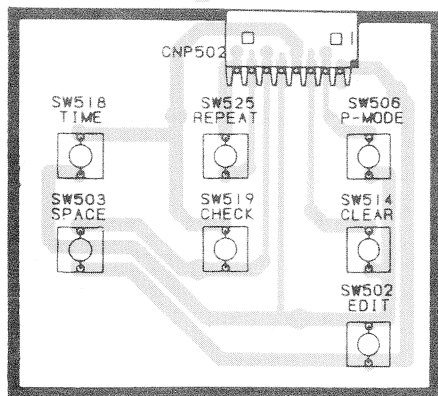
Symmetry between upper and lower or DC=0±0.05V

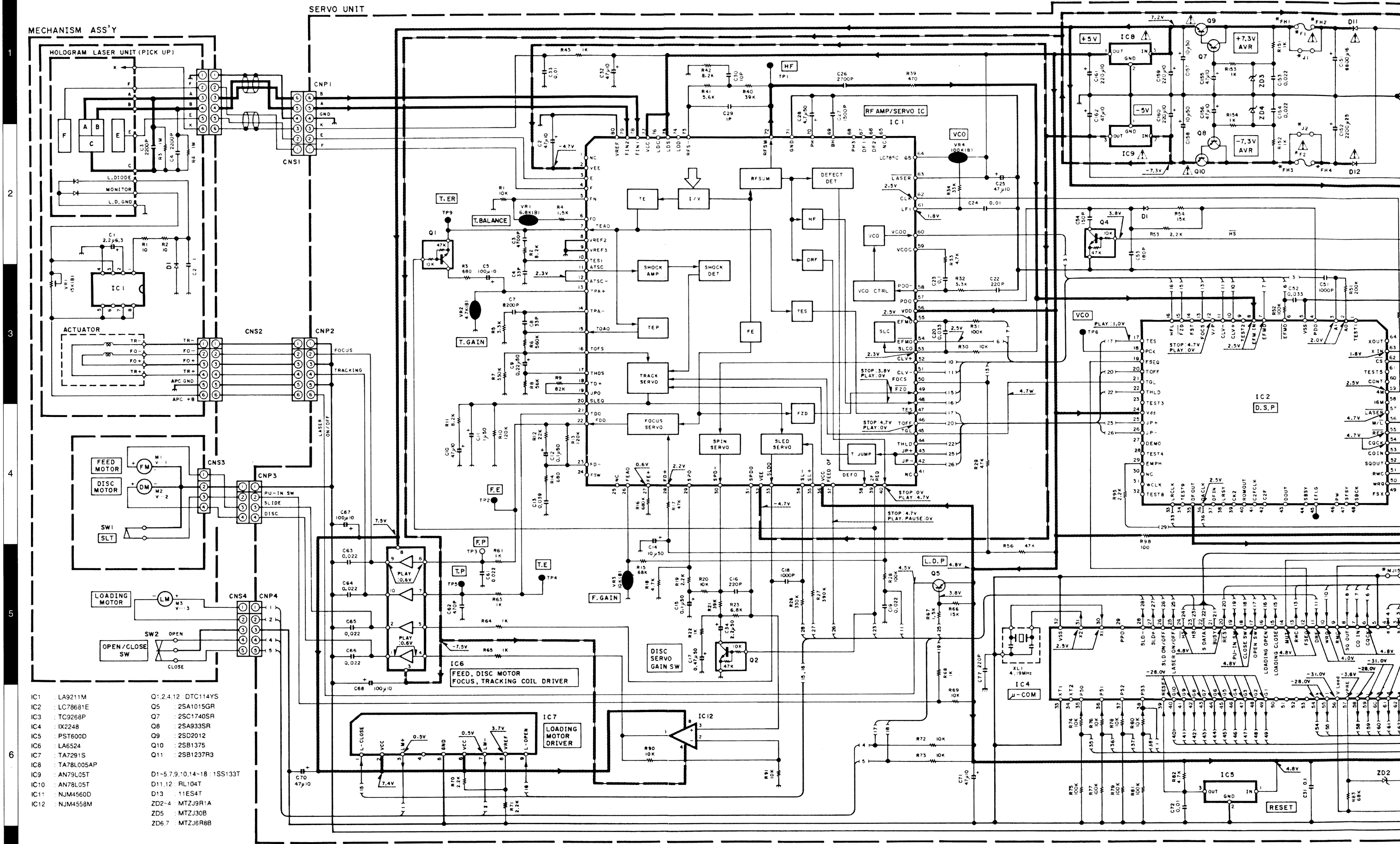
Oscilloscope

(e) H.F Level confirmation :

1.5Vp-p-2.5Vp-p

Oscilloscope

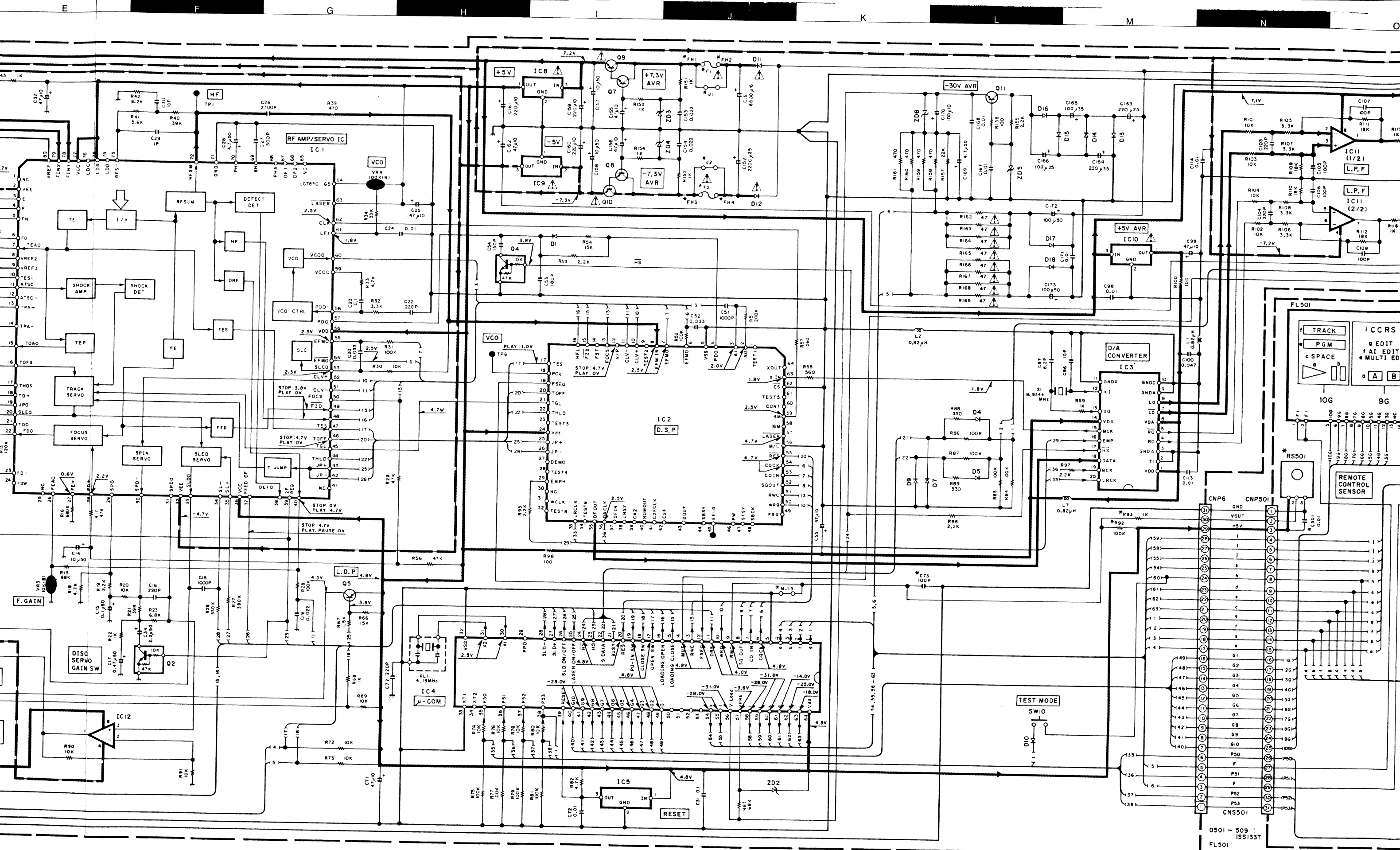




- | | |
|------------------|-----------------------------|
| IC1 : LA9211M | Q1: 2,4,12 : DTC114YS |
| IC2 : LC78681E | Q5 : 2SA1015GR |
| IC3 : TC9268P | Q7 : 2SC1740SR |
| IC4 : IX2248 | Q8 : 2SA933SR |
| IC5 : PST600D | Q9 : 2SD2012 |
| IC6 : LA6524 | Q10 : 2SB1375 |
| IC7 : TA7291S | Q11 : 2SB1237R3 |
| IC8 : TA78L005AP | |
| IC9 : AN79L05T | D1-5,7,9,10,14-18 : 1SS133T |
| IC10 : AN78L05T | D11,12 : RL104T |
| IC11 : NJM4560D | D13 : 11ES4T |
| IC12 : NJM4558M | ZD2-4 : MTZJ9R1A |
| | ZD5 : MTZJ30B |
| | ZD6,7 : MTZJ6R8B |

CAUTION: For continued safety, replace safety critical components only with manufacturer's recommended parts (refer to parts list). Δ indicates safety critical components. To reduce the risk of electric shock, leakage-current or resistance measurements shall be carried out (exposed parts are acceptably insulated from the supply circuit) before the appliance is returned to the customer.

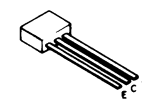
• DC voltages are as measured with a high impedance voltmeter. Values may vary slightly due to individual instruments or/and units.



recommended parts (refer to parts list). Δ indicates safety critical components.
 carried out (exposed parts are acceptably insulated from the supply circuit)

• DC voltages are as measured with a high impedance voltmeter. Values may vary slightly due to variations between individual instruments or/and units.

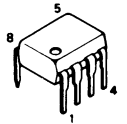
DTC114YS



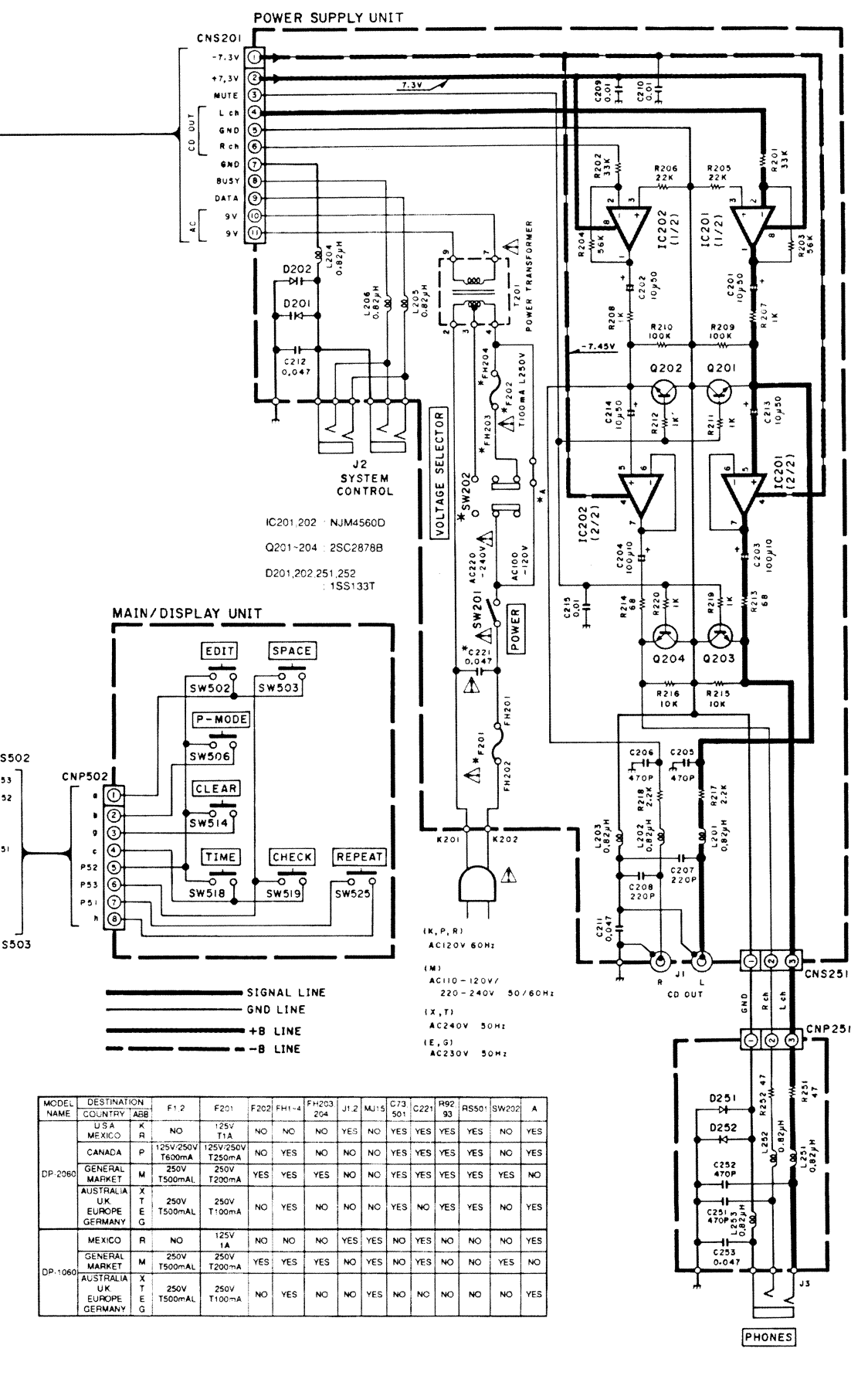
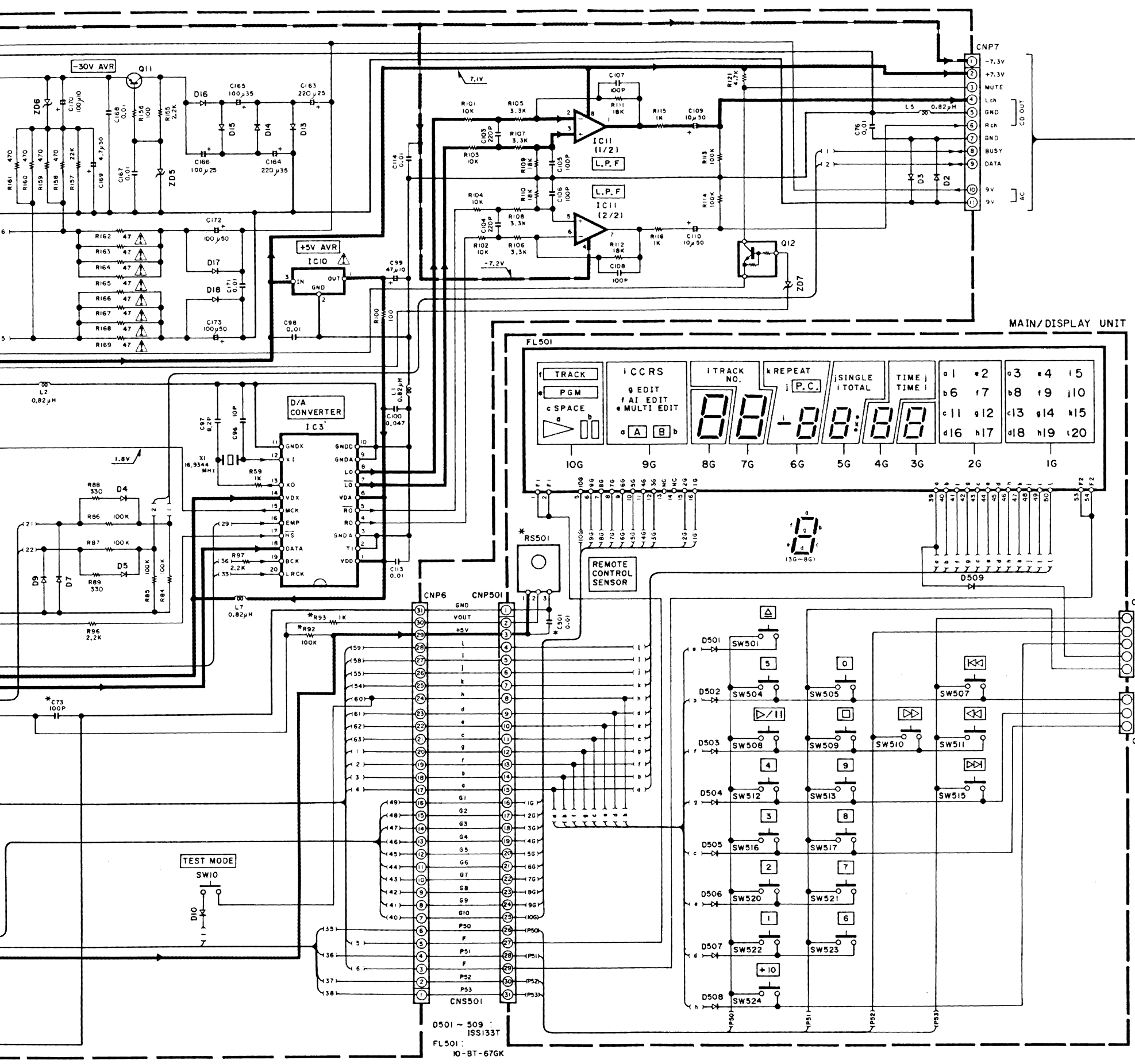
2SB1375
2SD2012



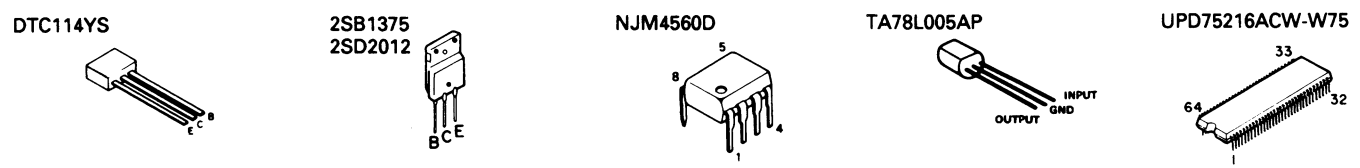
NJM4560D



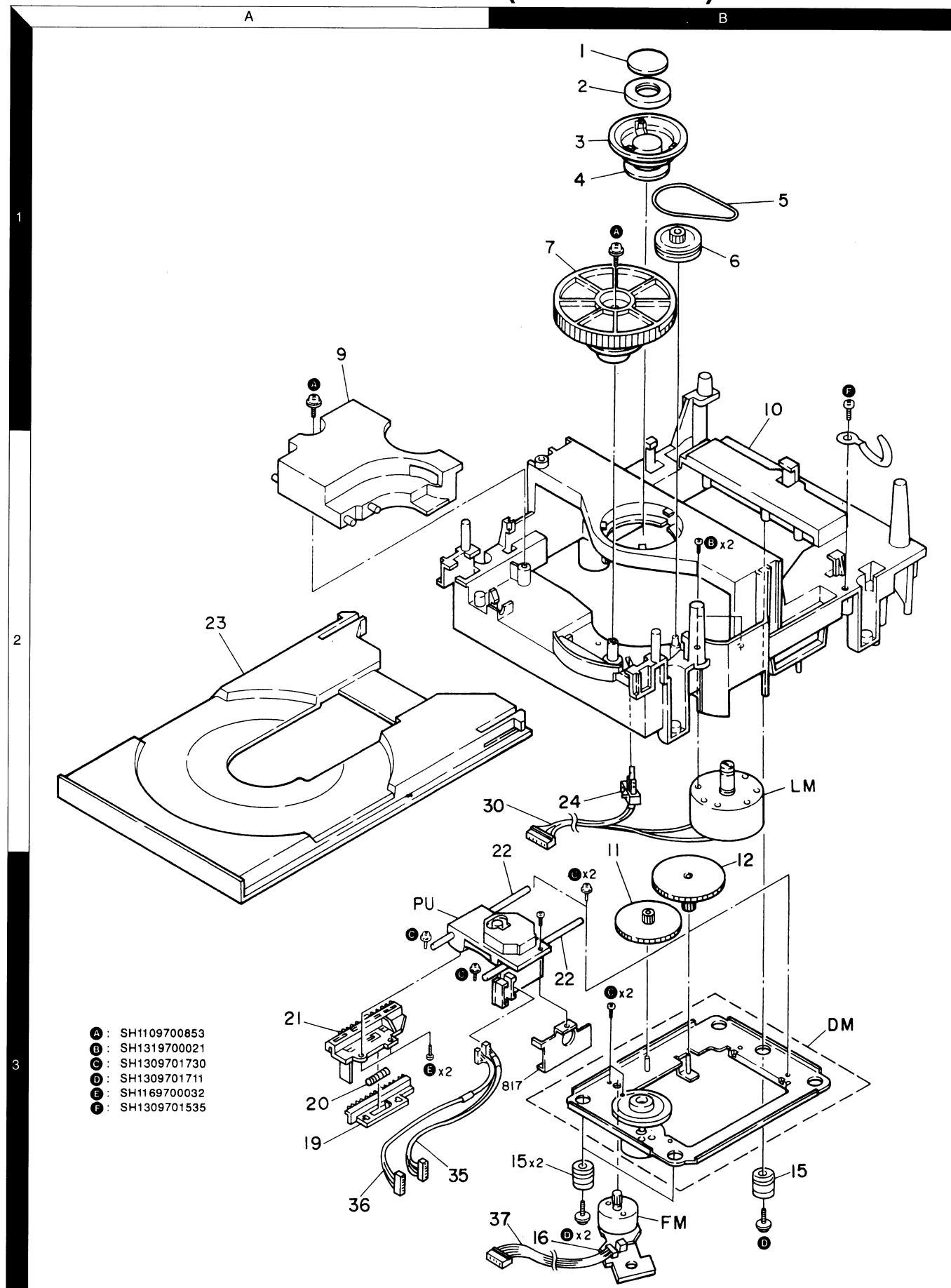
0501 ~ 509 : ISS133T
 FL501 : IO-BT-67GK



MODEL NAME	DESTINATION	ABB	F12	F201	F202	FH1-4	FH203	J12	MJ15	C73	C221	R92	RS501	SW202	A
DP-2060	USA	A	NO	125V T1A	NO	NO	NO	YES	NO	YES	YES	YES	YES	NO	YES
	MEXICO	B	NO	125V/250V T250mA	NO	NO	NO	NO	NO	YES	YES	YES	YES	NO	YES
	CANADA	P	NO	125V/250V T250mA	NO	YES	NO	NO	NO	YES	YES	YES	YES	NO	YES
DP-1060	GENERAL MARKET	M	NO	250V T200mA	YES	YES	YES	NO	NO	YES	NO	NO	NO	NO	YES
	AUSTRALIA	X	NO	250V T200mA	NO	NO	NO	NO	NO	YES	NO	YES	YES	NO	YES
	UK	T	NO	250V T100mA	NO	YES	NO	NO	NO	NO	YES	NO	NO	NO	YES
DP-1060	GENERAL MARKET	M	NO	125V 1A	NO	NO	NO	YES	YES	NO	YES	NO	NO	NO	YES
	AUSTRALIA	X	NO	250V T200mA	YES	YES	YES	NO	YES	NO	YES	NO	NO	NO	YES
	UK	T	NO	250V T100mA	NO	YES	NO	NO	NO	YES	NO	NO	NO	NO	YES

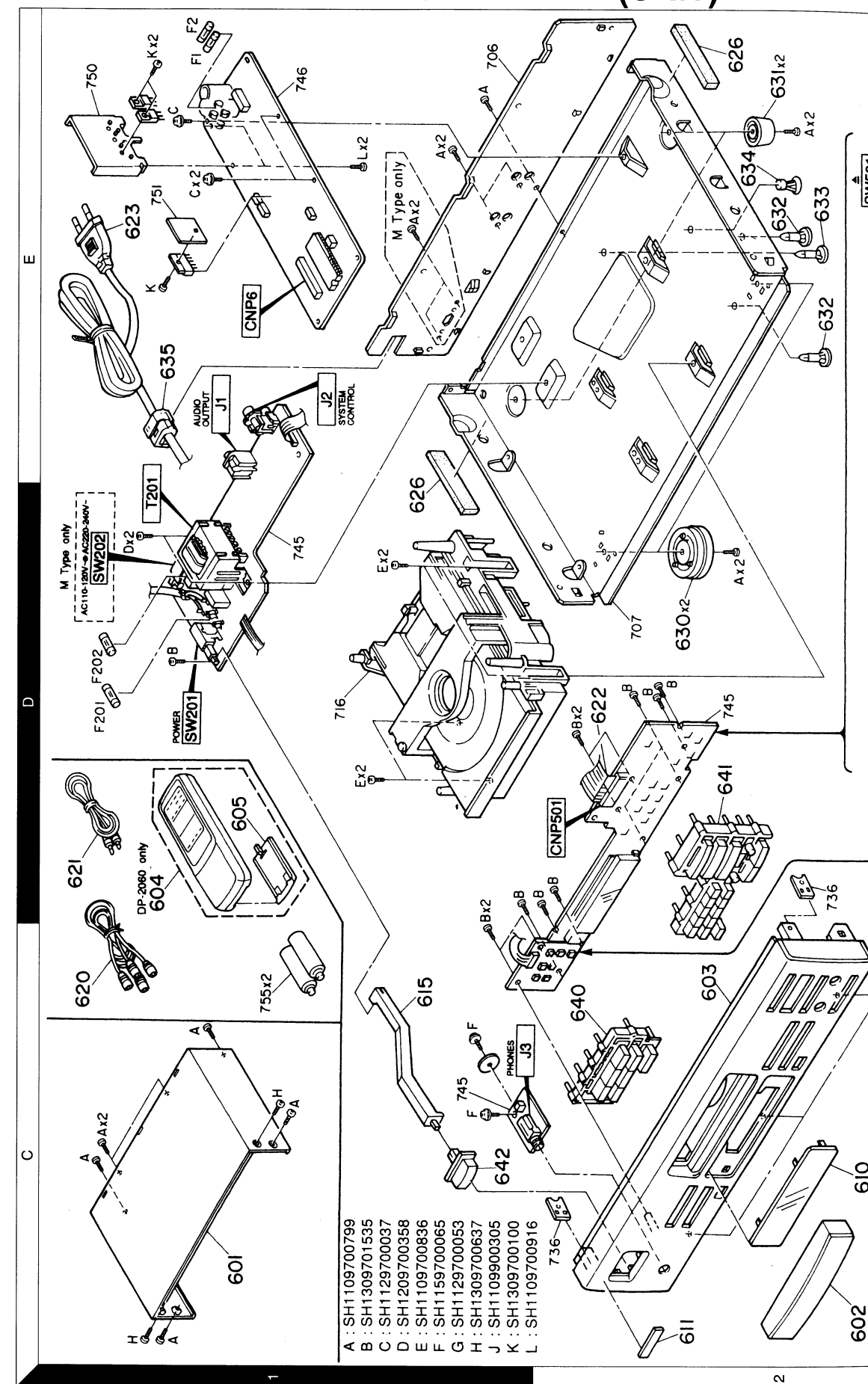


EXPLODED VIEW (MECHANISM)



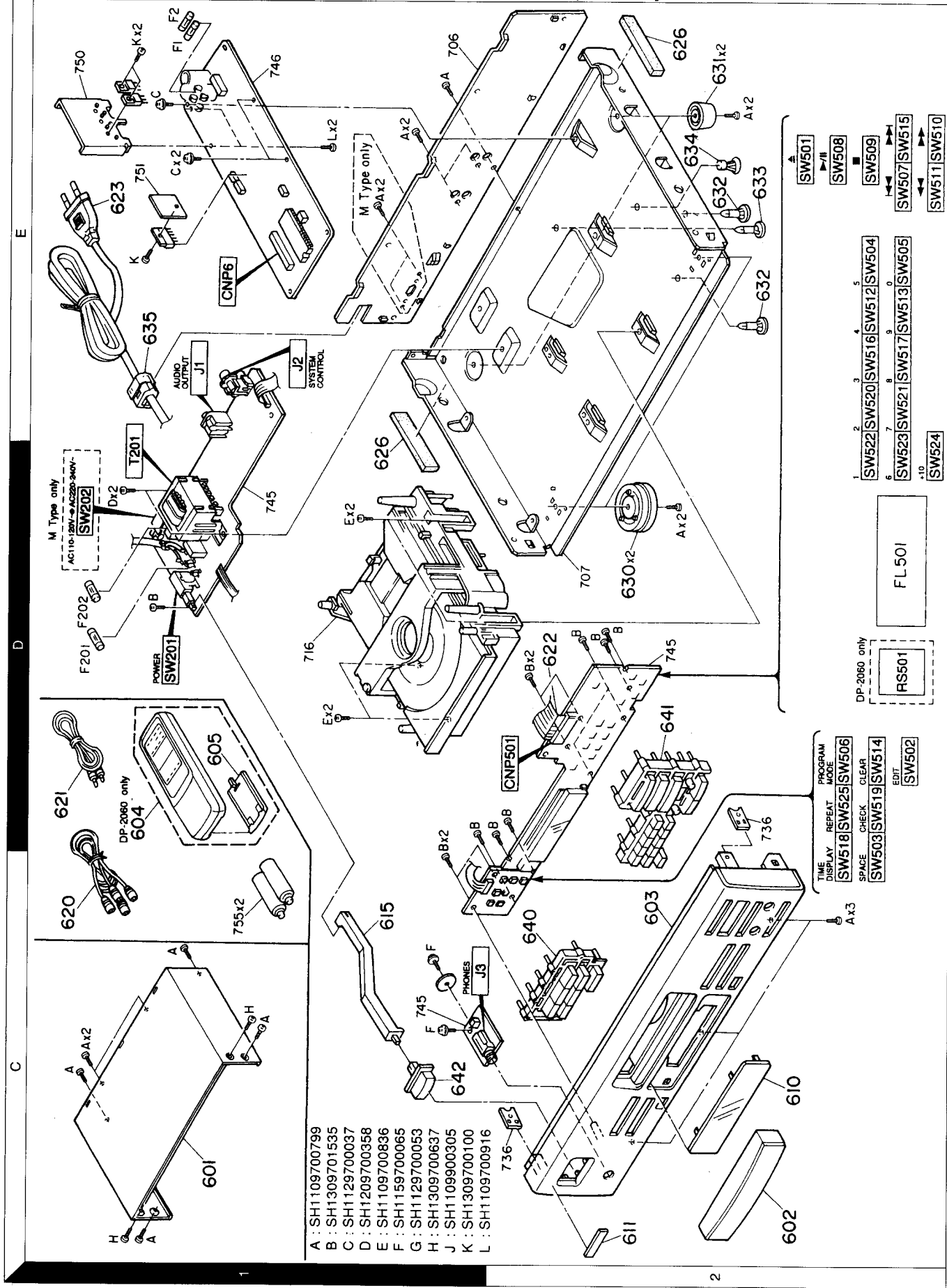
Parts with the exploded numbers larger than 700 are not supplied

EXPLODED VIEW (UNIT)



Parts with the exploded numbers larger than 700 are not supplied

EXPLODED VIEW (UNIT)



- A : SH1109700799
- B : SH1309701535
- C : SH1129700037
- D : SH1209700358
- E : SH1109700836
- F : SH1159700065
- G : SH1129700053
- H : SH1309700637
- J : SH1109900305
- K : SH1309700100
- L : SH1109700916

Parts with the exploded numbers larger than 700 are not supplied

PARTS LIST

* New Parts
Parts without Parts No. are not supplied.
Les articles non mentionnés dans le Parts No. ne sont pas fournis.
Teile ohne Parts No. werden nicht geliefert.

Ref. No.	Address	New Part	Parts No.	Description	Destination
参照番号	位置	新部	部品番号	部品名 / 規格	仕向番号
D		*	SH1209700358	SCREW	
E		*	SH1109700836	SPECIAL SCREW	
F		*	SH1129700053	SPECIAL SCREW	
G		*	SH1309700637	R-ANT SCREW	
H		*	SH1109900305	WASHER	
J		*	SH1309700100	SCREW	
L		*	SH1109700916	SCREW	
ELECTRIC PARTS					
C2		*	CE04KW1A470M	ELECTRO C 47UF 10WV	
C3		*	CK41DB1C47K	CYLN. CHIP C 47UF K	
C4		*	CK41DB1H330J	CYLN. CHIP C 33UF K	
C5		*	CE04KW1A101M	ELECTRO C 10UF 10WV	
C7		*	CK41DB1C822M	CYLN. CHIP C 8200PF K	
C8		*	CC41DSL1H330J	CYLN. CHIP C 33PF J	
C9		*	CE04KW1HR22M	ELECTRO C 0.22UF 50WV	
C10		*	CE04KW1A470M	ELECTRO C 47UF 10WV	
C11		*	CE04KW1H010M	ELECTRO C 1.0UF 50WV	
C12		*	CE04KW1HOR1M	ELECTRO C 0.1UF 50WV	
C13		*	CK45FB1H393K	CERAMIC 0.039UF K	
C14		*	CE04KW1H100M	ELECTRO C 10UF 50WV	
C15		*	CE04KW1HOR1M	ELECTRO C 0.1UF 50WV	
C16		*	CK41DB1H221K	CYLN. CHIP C 22PF K	
C17		*	CE04KW1HR47M	ELECTRO C 0.47UF 50WV	
C18		*	CK41DB1H102K	CYLN. CHIP C 100PF K	
C19		*	CK41DB1E223K	CYLN. CHIP C 0.022UF Z	
C20		*	CK45FB1H333K	CERAMIC 0.033UF K	
C22		*	CK41DB1H221K	CYLN. CHIP C 22PF K	
C23		*	CK45FB1H104K	CERAMIC 0.10UF K	
C24		*	CK41DB1C103K	CYLN. CHIP C 0.010UF K	
C25		*	CE04KW1A470M	ELECTRO C 47UF 10WV	
C26		*	CK41FB1H222M	CYLN. CHIP C 2200PF M	
C27		*	CK41DB1C152K	CYLN. CHIP C 1500PF K	
C28		*	CE04KW1HR47M	ELECTRO C 4.7UF 50WV	
C29		*	CC41DSL1H010C	CYLN. CHIP C 1.0PF C	
C30		*	CK41DB1H100J	CYLN. CHIP C 10PF J	
C31		*	C92FM1H101J	WVLR 0.10UF J	
C32		*	CE04KW1A470M	ELECTRO C 47UF 10WV	
C33		*	CK41DB1C103K	CYLN. CHIP C 0.010UF K	
C34		*	CE04KW1HR22M	ELECTRO C 2.2UF 50WV	
C51		*	CK41DB1H102K	CYLN. CHIP C 100PF K	
C52		*	CK41DB1H471K	CYLN. CHIP C 470PF K	
C53		*	CK45FB1H333K	CERAMIC 0.033UF K	
C54		*	CK45FB1H181K	CERAMIC 180PF K	
C55		*	CK41FB1H151K	CYLN. CHIP C 150PF K	
C56		*	CE04KW1A470M	ELECTRO C 47UF 10WV	
C61		*	CK41DB1E223K	CYLN. CHIP C 0.022UF Z	
C62		*	CK41DB1H471K	CYLN. CHIP C 470PF K	
C63		*	CK41DB1E223K	CYLN. CHIP C 0.022UF Z	
C67		*	CE04KW1A101M	ELECTRO C 100UF 10WV	
C70		*	CE04KW1A470M	ELECTRO C 47UF 10WV	
C72		*	CK41DB1C103K	CYLN. CHIP C 0.010UF K	
C73		*	CK41DB1H101K	CYLN. CHIP C 100PF K	
C76		*	CK45FB1H103Z	CERAMIC 0.010UF Z	
C77		*	CK41FB1H221K	CYLN. CHIP C 220PF K	

* New Parts
Parts without Parts No. are not supplied.
Les articles non mentionnés dans le Parts No. ne sont pas fournis.
Teile ohne Parts No. werden nicht geliefert.

Ref. No.	Address	New Part	Parts No.	Description	Destination
参照番号	位置	新部	部品番号	部品名 / 規格	仕向番号
601	1C	*	A01-3205-08	METALLIC CABINET	
602	2C	*	A29-0388-08	PANEL (TRAY)	
603	2C	*	A60-0685-08	PANEL (DP-2060)	
604	1C	*	A60-0686-08	PANEL (DP-1060)	
604	2C	*	A70-0983-05	REMCON ASSY (DP-2060)	
605	1D	*	A09-0170-08	BATTERY COVER (DP-2060)	
610	2C	*	B10-2077-08	FRONT GLASS	
611	2C	*	B43-0287-04	KENWOOD BADGE	
-	-	*	B60-1680-08	INSTRUCTION MANUAL (ENGLISH)	
-	-	*	B60-1681-08	INSTRUCTION MANUAL (ENG/FRE)	
-	-	*	B60-1682-08	INSTRUCTION MANUAL (E/S/C)	
-	-	*	B60-1683-08	INSTRUCTION MANUAL (E/F/D/I/S)	
-	-	*	B60-1684-08	INSTRUCTION MANUAL (GERMAN)	
-	-	*	B60-1685-08	INSTRUCTION MANUAL (SPANISH)	
-	-	*	B60-1935-08	INSTRUCTION MANUAL (TINAW)	
615	1C	*	D21-1780-08	EXTENSION SHAFT	
620	1C	*	E30-0505-05	AUDIO CORD	
621	1D	*	E30-2733-05	CORD WITH PLUG	
622	2D	*	E35-1046-08	FLAT CABLE	
623	1E	*	E30-0459-05	AC POWER CORD	
623	1E	*	E30-0974-05	AC POWER CORD	
623	1E	*	E30-2750-08	AC POWER CORD	
623	1E	*	E30-2753-08	AC POWER CORD	
626	1D, 2E	*	G10-0199-08	CHASSIS CUSHION	
-	-	*	H10-5842-08	POLYSTYRENE FOAMED FIXTURE	
-	-	*	H10-5843-08	POLYSTYRENE FOAMED FIXTURE	
-	-	*	H25-1542-08	PROTECTIVE BAG	
-	-	*	H50-1159-08	ITEM CARTON CASE (DP-2060)	
-	-	*	H50-1159-08	ITEM CARTON CASE (DP-2060)	
-	-	*	H50-1160-08	ITEM CARTON CASE (DP-2060)	
-	-	*	H50-1161-08	ITEM CARTON CASE (DP-1060)	
-	-	*	H50-1162-08	ITEM CARTON CASE (DP-1060)	
630	2D	*	J02-1034-05	FOOT	
631	2E	*	J02-1120-08	UNIT HOLDER	
632	2E	*	J19-3737-08	UNIT HOLDER	
633	2E	*	J19-3738-08	UNIT HOLDER	
634	2E	*	J19-3755-08	UNIT HOLDER	
635	1E	*	J42-0083-05	AC CORD BUSHING	
640	2C	*	SH1309330057	NYLON BAND	
641	2D	*	K29-6074-08	KNOB	
642	1C	*	K29-6075-08	KNOB (POWER)	
642	1C	*	K29-6076-08	KNOB (POWER)	
T201	1D	*	L07-1867-08	POWER TRANSFORMER	KPR
T201	1D	*	L07-1868-08	POWER TRANSFORMER	M
T201	1D	*	L07-1869-08	POWER TRANSFORMER	XT
T201	1D	*	L07-1870-08	POWER TRANSFORMER	EG
A		*	SH1109700799	SCREW	
B		*	SH1309701535	SCREW	
C		*	SH1129700037	SPECIAL SCREW	

L:Scandinavia K:USA P:Canada G:Germany
Y:PX(Far East, Hawaii) T:England E:Europe R:Mexico
Y:AA(FES/Europe) X:Australia M:Other Areas

L:Scandinavia K:USA P:Canada G:Germany
Y:PX(Far East, Hawaii) T:England E:Europe R:Mexico
Y:AA(FES/Europe) X:Australia M:Other Areas

△ indicates safety critical components.

△ indicates safety critical components.

* New Parts
Parts without Parts No. are not supplied.
Les articles non mentionnés dans le Parts No. ne sont pas fournis.
Teile ohne Parts No. werden nicht geliefert.

Table with columns: Ref. No., Address, New Parts, Parts No., Description, Re-destination marks. Includes sub-section DP-1060/DP-2060 with various parts like METALLIC CABINET, PANEL, BATTERY COVER, etc.

LS Scandinavia, KUSA, PCanada, GGermany, RMexico, Y:PX(Far East, Hawaii), T:England, EEurope, X:Australia, M:Other Areas

△ indicates safety critical components

* New Parts
Parts without Parts No. are not supplied.
Les articles non mentionnés dans le Parts No. ne sont pas fournis.
Teile ohne Parts No. werden nicht geliefert.

Table with columns: Ref. No., Address, New Parts, Parts No., Description, Re-destination marks. Includes sub-section ELECTRIC PARTS with various electronic components like CYLND CHIP, CERAMIC, ELECTRO, etc.

LS Scandinavia, KUSA, PCanada, Y:PX(Far East, Hawaii), T:England, EEurope, X:Australia, M:Other Areas

△ indicates safety critical components

* New Parts
Parts without Parts No. are not supplied.
Les articles non mentionnés dans le Parts No. ne sont pas fournis.
Teile ohne Parts No. werden nicht geliefert.

Table with columns: Ref. No., Address, New Parts, Parts No., Description, Re-destination marks. Includes various electronic components like CYLND CHIP, CERAMIC, ELECTRO, FUSE, etc.

LS Scandinavia, KUSA, PCanada, GGermany, RMexico, Y:PX(Far East, Hawaii), T:England, EEurope, X:Australia, M:Other Areas

△ indicates safety critical components

PARTS LIST

PARTS LIST

PARTS LIST

* New Parts
Parts without Parts No. are not supplied.
Les articles non mentionnés dans le Parts No. ne sont pas fournis.
Teile ohne Parts No. werden nicht geliefert.

Ref. No. 参照番号	Address/New Parts 位置新	Parts No. 部品番号	Description 部品名 / 規格	Desti- nation 向	Re- marks 備考
Q11		2SB1237R3	TRANSISTOR		
Q12		QTC114YS	TRANSISTOR		
Q201-204	2D	2SC2878B	TRANSISTOR		
RS501		M02-1174-05	ELECTRIC MODULE (DP-2060)		
MECHANISM PARTS					
1	1B	T50-1067-08	MAGNET SUPPORT		
2	1B	SH1315750001	MAGNET		
3	1B	SH1102140396	MAGNET HOLDER		
4	1B	G13-0402-08	MAGNET CUSHION		
5	1B	D16-0362-08	DRIVE BELT		
6	1B	D15-0364-08	DRIVE PULLEY		
7	1B	SH1102810098	PINION GEAR		
10	1B	A11-1021-08	LOADING CHASSIS		
11	2B	SH1302810228	GEAR (MIDDLE)		
12	2B	SH1302810229	GEAR (DRIVE)		
15	3B	SH1303260448	CUSHION		
16	3B	SH1305301248	PUSH SWITCH(SLT)		
19	3A	SH1302810232	GEAR (RACK MOVE)		
20	3A	SH125280244	SPRING (RACK)		
21	3A	SH1302810231	GEAR (RACK FIX)		
22	2B, 3B	SH1302900394	SHAFT (GUIDE)		
23	2A	SH1102140395	DISC TRAY		
24	2B	S74-0027-08	LEAF SW (OPEN/CLOSE)		
30	2B	E35-1053-08	WIRING HARNESS		
35	3A	E35-1050-08	WIRING HARNESS		
36	3A	E35-1051-08	WIRING HARNESS		
37	3B	E35-1052-08	WIRING HARNESS		
A		SH1109700853	SPECIAL SCREW		
B		SH1318700021	SPECIAL SCREW		
C		SH1309701750	SCREW		
D		SH1309701711	SCREW+WASHER 3R2W13-1S		
E		SH1189700032	SCREW		
F		SH1309701535	SCREW		
DM	3B	SH1306300457	DISC MOTOR		
FM	3B	SH1256300127	FEED MOTOR		
LH	2B	SH1106300200	MOTOR		
PU	3A	T25-0032-08	CD PICKUP ASSY		

* New Parts
Parts without Parts No. are not supplied.
Les articles non mentionnés dans le Parts No. ne sont pas fournis.
Teile ohne Parts No. werden nicht geliefert.

Ref. No. 参照番号	Address/New Parts 位置新	Parts No. 部品番号	Description 部品名 / 規格	Desti- nation 向	Re- marks 備考
R82		RD41DB28472J	CARBON	1/8W	
R83		RD41DB28683J	CARBON	J 1/8W	
R84	-87	RD41DB28104J	CARBON	J 1/8W	
R88 , 89		RD41DB28331J	CARBON	J 1/4W	
R92		RD41DB28104J	CARBON	J 1/8W	2060
R97		RD41DB28222J	CARBON	J 1/8W	
R101-104		RD41DB28103J	CARBON	J 1/8W	
R105-108		RD41DB28332J	CARBON	J 1/8W	
R109-112		RD41DB28183J	CARBON	J 1/8W	
R113, 114		RD41DB28104J	CARBON	J 1/8W	
R156		RD41DB28101J	CARBON	J 1/8W	
R158-161		RD41DB28471J	CARBON	J 1/8W	
R162-169		RD41DB28470J	CARBON	J 1/8W	
VR1		R12-2048-08	TRIMMING POT(6.8K)<T. BALANCE>		
VR2		R12-1619-05	TRIMMING POT(4.7K)<T. GAIN>		
VR3		R12-3685-05	TRIMMING POT(10K) <F. GAIN>		
VR4		R12-3651-05	TRIMMING POT(100K)<VCO>		
SW10		SH1305301218	SWITCH (TEST. MODE)		M
SW201		S68-0036-08	SWITCH (POWER)		
SW202		S52-0001-05	SWITCH (VOLTAGE)		
SW501-525		SH1305301218	SWITCH (EJECT etc)		
D1 -5		1S5133T	DIODE		
D7		1S5133T	DIODE		
D9 , 10		1S5133T	DIODE		
D11 , 12		RL104T	DIODE		
D13		11ES4T	DIODE		
D14 -18		1S5133T	DIODE		
D201, 202	1D	1S5133T	DIODE		
D251, 252		1S5133T	DIODE		
D501-509		1S5133T	DIODE		
FL501	2D	10-8T-67GK	INDUCTOR TUBE		
ZD2 -4		MTZJ9R1A	ZENER DIODE		
ZD5		MTZJ30B	ZENER DIODE		
ZD6 , 7		MTZJ488B	ZENER DIODE		
IC1		LA9211M	IC		
IC2		LC78481E	IC		
IC3		TC9248P	IC		
IC4		JP275216ACW-W75	IC		
IC5		PST600D	IC		
IC6		LA6524	IC		
IC7		T47261S	IC (BRIDGE DRIVER)		
IC8		T47610BAP	IC (VOLTAGE REGULATOR/ +5V)		
IC9		AN79L05T	IC		
IC10		AN79L05T	IC		
IC11		NJM4560D	IC (OP AMP X2)		
IC12		NJM4558M	IC (OP AMP X2)		
IC201, 202		NJM4560D	IC (OP AMP X2)		
Q1 , 2		DTC114YS	TRANSISTOR		
Q4		DTC114YS	TRANSISTOR		
Q5		2SA1015GR	TRANSISTOR		
Q7		2SC1740SR	TRANSISTOR		
Q8		2SA933SR	TRANSISTOR		
Q9		2SD2012	TRANSISTOR		
Q10		2SB1375	TRANSISTOR		

Scandinavia KUSA P:Canada
Y:PA(Far East, Hawaii) T:England E:Europe
Y:AAFE(S:Europe) X:Australia M:Other Areas

Scandinavia KUSA P:Canada
Y:PA(Far East, Hawaii) T:England E:Europe
Y:AAFE(S:Europe) X:Australia M:Other Areas

△ indicates safety critical components

△ indicates safety critical components

DP-1060/2060

SPECIFICATIONS

[Format]

System Compact disc digital audio system
Laser Semiconductor laser
Number of channels 2 channels
playing rotation 200 rpm ~ 500 rpm (CLV)

[D/A Convertors]

D/A Conversion 1 Bit
Oversampling 8 fs (352.8 kHz)

[Audio]

Frequency response 8 Hz ~ 20 kHz \pm 1.0 dB
Signal to noise ratio More than 94 dB
Dynamic range More than 92 dB
Total harmonic distortion Less than 0.005%

Channel separation More than 83 dB
Wow & flutter Unmeasurable limit
Output level/impedance
Fixed 2.0V/3.3k Ω
Headphone output 6mW (32 Ω)

[General]

Power consumption 12W
Dimensions W: 440 mm (17 - 5/16")
H: 106 mm (4 - 3/16")
D: 310 mm (12 - 3/16")
Weight (Net) 3.8 kg (8.4 lb)

Note:

KENWOOD follows a policy of continuous advancements in development. For this reason specifications may be changed without notice.

Note:

Component and circuitry are subject to modification to insure best operation under differing local conditions. This manual is based on Europe (E) standard, and provides information on regional circuit modification through use of alternate schematic diagrams, and information on regional component variations through use of parts list.

KENWOOD CORPORATION

14-6, Dogenzaka 1-chome, Shibuya-ku, Tokyo, 150 Japan

KENWOOD SERVICE CORPORATION

P.O. BOX 22745, 2201 East Dominguez St., Long Beach, CA 90801-5745, U.S.A.

KENWOOD ELECTRONICS CANADA INC.

6070 Kestral Road, Mississauga, Ontario, Canada L5T 1S8

KENWOOD ELECTRONICS LATIN AMERICA S.A.

P.O. BOX 55-2791, Piso 6 plaza Chase, Cl. 47 y Aquilino de la Guardia Panama; Republic de Panama

TRIO-KENWOOD U.K. LIMITED

KENWOOD House, Dwight Road, Watford, Herts., WD1 8EB., United Kingdom

KENWOOD ELECTRONICS BENELUX N.V.

Meachelsesteenweg 418, B-1930 Zaventem, Belgium

KENWOOD ELECTRONICS DEUTSCHLAND GMBH

Rembrücker Str. 15, 63150 Heusenstamm, Germany

TRIO-KENWOOD FRANCE S.A.

13 Boulevard Ney, 75018 Paris, France

KENWOOD ELECTRONICS ITALIA S.p.A.

Via G. Sirtori, 7/9 20129, Milano, Italy

KENWOOD ESPANA S.A.

Bolivia, 239-08020 Barcelona, Spain

KENWOOD ELECTRONICS AUSTRALIA PTY. LTD. (A.C.N. 001499 074)

P.O. Box 504, 8 Figtree Drive, Australia Centre, Homebush, N.S.W. 2140, Australia

KENWOOD & LEE ELECTRONICS, LTD.

Unit 3712-3724, Level 37, Tower 1, Metroplaza, 223 Hing Fong Road, Kwai Fong, T.S., Hong Kong

KENWOOD ELECTRONICS SINGAPORE PTE LTD.

No. 1 Genting Lane # 07-00, KENWOOD Building, Singapore, 1334